

the Land Degradation Surveillance Framework

LDSF

Field Guide



Tor-G. Vågen (World Agroforestry Centre (ICRAF))

Leigh Winowiecki , Lulseged Tamene Desta (International Centre for Tropical Agriculture (CIAT))

Jerome E. Tondoh (World Agroforestry Centre (ICRAF))

v4 - 2013



Introduction

the Land Degradation Surveillance Framework

The LDSF was developed by the authors and colleagues over several years of land degradation research in Kenya's Lake Victoria basin, Madagascar, Mali and southern Africa.

The LDSF is designed to provide a biophysical baseline at landscape level, and a monitoring and evaluation framework for assessing processes of land degradation and the effectiveness of rehabilitation measures (recovery) over time.

The framework is built around a hierarchical field survey and sampling protocol using sites that are 100 km² (10 x 10 km).

Why use a hierarchical sampling design?

Due to the complex nature of ecosystems, multiple perspectives are needed to understand ecosystem processes, and variability of ecological variables at different spatial scales. A nested hierarchical sampling design is useful for developing predictive models with global coverage, while maintaining local relevance.

LDSF sites may be selected at random across a region or watershed, or they may represent areas of planned activities (interventions) or special interest. Within each site, 16 tiles (2.5 x 2.5 km in size) are created and random centroid locations for clusters within each tile are generated. Each cluster consists of 10 plots, with randomized centre-point locations falling within a 564 m radius from each cluster centroid. Thus, the LDSF has two (or in some cases three) levels of randomization, which minimize local biases



Why systematic baselines?

Very little is known about the state of ecosystems across Africa, including land cover and vegetation trends. This is particularly important in understanding land degradation processes, predicting changes in climate and improving land management.

Systematic baselines of soil and ecosystem properties allows for a proper assessment of landscape performance and/or prediction of change over time.

that may arise from convenience sampling. Each plot is 0.1 ha (1000 m²) and consists of 4 subplots, 0.01 ha in size.

The Land Degradation Surveillance Framework was developed as a response to a lack of methods for systematic landscape-level assessment of soil and ecosystem health. Many projects use the LDSF sampling framework for such assessments. The framework provides field protocols for measuring indicators of the "health" of an ecosystem, including vegetation cover, structure and floristic composition, historic land use, visible signs of soil degradation, and soil physical characteristics. A sampling framework for collection of soil samples is also provided, as described in more detail later.

This field guide describes the LDSF field survey methods and is designed to be used in both training and as a reference in field, during survey campaigns.

Proper preparation before going to the field is critical to ensure a successful field sampling campaign, and for the safety and well-being of the field team. Prior to any field campaign, it is important to have a good understanding of the area to be surveyed, including its topography, climate and vegetation characteristics, accessibility, and its security situation.

When conducting field campaigns in new countries it is generally recommended that a reconnaissance survey is conducted where local contacts are established and agreements are made.

Obtain permission from the land owner(s) to sample a given area, and make sure that he/she understands what you are doing. Informing local government officers and community leaders about your activities is also a good idea.

Example of pre-existing information about the area to be surveyed include: maps (topographical, geological, soils and/or vegetation), satellite images and/or historical aerial photographs, long-term weather station data, government statistics, census data etc.

Preparing

to go to the field



Load coordinates of sampling locations into the GPS units before going to the field. If possible, load local maps into the unit to aid in navigation in the field.

Do a thorough equipment check (see Appendix) before leaving for the field. This includes making sure you have enough water to complete the infiltration tests.

Ideally, a 4- to 5-person field team can complete 10 sampling plots per day, this includes completing 3 infiltration tests per cluster.

Safety Tips:

Avoid any areas where you might be placing the field team at any risk of harm or injury.

Always carry an emergency first aid kit.

When in remote areas, be sure someone knows where the team will be operating.

Carry a satellite phone, where necessary.

At least one field crew member should be properly trained in first aid.

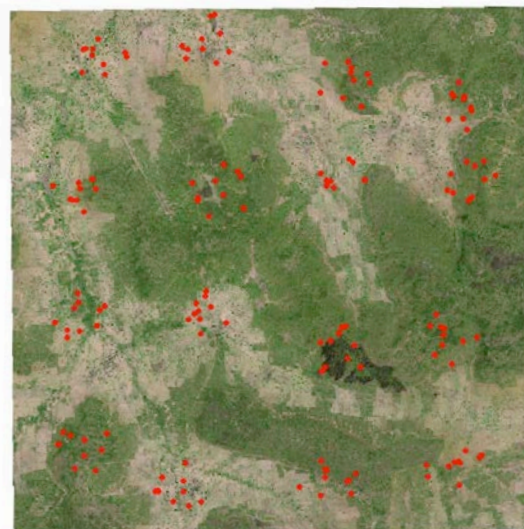
Identify emergency evacuation routes and nearest hospitals in case of emergency.

the LDSF sampling design

LDSF “Sites” or “Blocks” are 10 x 10 km in size. The basic sampling unit is called a “Cluster”, and consists of 10 “Plots” (described later).

The centre-point of each cluster in LDSF is randomly placed within a “tile” in each Sentinel Site. The sampling plots are then randomized around each cluster centre-point, resulting in a spatially stratified, randomized sampling design (see example on the right).

Randomizing the plots in the cluster is extremely important as you will want to minimize any local biases that may arise from convenience sampling. The randomization procedures are normally done using customized programs or scripts, but can be also be conducted in any spreadsheet program.



10 x 10 km site with sampling clusters

the LDSF sampling design

Plot level measurements

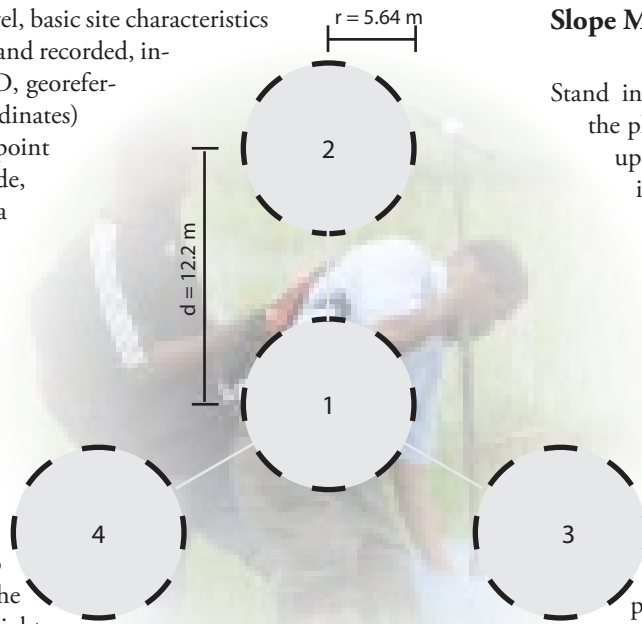
At the plot level, basic site characteristics are described and recorded, including site ID, georeferencing (coordinates) of the center-point (1), altitude, date, and a photograph is taken. Slope, landform, presence/absence of soil and water conservation structures are also recorded. The figure on the right shows a LDSF radial arm plot. Each plot is designed to sample a 1,000 m² area.

Plot-level vegetation cover types and strata, land use, land ownership and primary current use are based on a modification of the FAO Land Cover Classification System (LCCS).

Initially, record the easting (longitude), northing (latitude), elevation and position error on the field recording sheet.

Setting up the Plot

Using a measuring tape or a pre-marked chain, measure out the distance (12.2 m) from the plot center-point to the center of the **down-slope** sub-plot (2). Mark this subplot center point. Subplots 3 and 4 should be offset 120 and 240 degrees from the down-slope point, respectively.



0.1 ha radial-arm plot layout. Georeferencing and infiltration measurements should be completed in the center of the plot (sub-plot 1). The dashed circles represent 0.01 ha sub-plots in which soil surface and vegetation observations are made. r is the subplot radius, d is the distance between sub-plot center-points.

the center-point to the other sub-plots;
slope distance = horizontal distance/cos(Slope)

Slope Measurements

Stand in the centre of the plot and take an up-slope sighting along the steepest part to a point on the up-slope plot boundary. Use a clinometer to measure the slope in degrees. Repeat the process in the down-slope direction. Ensure that you sight to a location that is at the same height as the observer's eye-level.

In steep terrain (slope > 25°), use the following formula to calculate the distance from

Sub-plot level measurements

Soil Surface Characterization

In each sub-plot (1, 2, 3 and 4), signs of visible erosion are recorded and classified (as rill, gully or sheet - see below). Percent rock/stone/gravel cover on the soil surface is also recorded.

Vegetation Measurements

Woody- and herbaceous cover ratings are made using a Braun-Blanquet (Braun-Blanquet, 1928) vegetation rating scale from 0 (bare) to 5 (>65% cover).

Woody plants, shrubs (1.5-3 m height) and trees (>3 m height), are counted in each sub-plot for density calculations. Tree and shrub distance-based measurements are carried out using the T-square method (Krebs, 1989) to determine vegetation distribution.

Soil Sampling

Top- and subsoil samples are collected from the center of each subplot at 0-20 cm and 20-50 cm depth increments, respectively. Top soil subplot samples are pooled (composited) into one sample for each plot, the same is done with subsoil samples.

Before samples are pooled, soil field texture is determined on top- and subsoil samples.

Auger depth restrictions are recorded at each sub-plot (in cm), if present.

Soil erosion by water

Sheet erosion is the uniform removal of soils in thin layers. Overgrazed and cultivated soils are most vulnerable to sheet erosion, and signs of sheet erosion include bare areas, water puddling on the surface as soon as rain falls, visible grass roots, exposed tree roots, and exposed subsoil or stony soils.

Rill erosion is the intermediate stage between sheet and gully erosion. Rills are shallow drainage lines *less than 30 cm deep*. The channels are shallow enough that they can usually be removed by tillage; thus, after an eroded field has been cultivated, determining whether the soil losses resulted from sheet or rill erosion is generally impossible.

Gully erosion is the consequence of water that cuts into the soil along the line of flow. Gully channels are *deeper than 30 cm*. In contrast to rills, they cannot be obliterated by ordinary tillage.

Field Measurements

Measuring soil infiltration capacity



Soil infiltration measurements are the most time consuming aspect of the field measurements, so these should be set as soon as possible. It is desirable to obtain as many infiltration measurements as possible, with a minimum of 3 in each cluster. Allocate these randomly to the different plots in the cluster.

1. To complete the infiltration measurement you will need; a 17 cm outer diameter, 20 cm in height infiltration ring, a sledge hammer, approximately 25 liters of water, and an infiltration field recording sheet.
2. The infiltration ring should be placed at the center of subplot one. To ensure that the ring does not leak, drive it at least 2 cm into the soil taking care not to disturb the soil surface too much.
3. Remove any vegetation, litter and large stones from inside the ring, but make sure not to disturb the soil surface (e.g. by digging out large stones or uprooting vegetation). If the soil surface is accidentally disturbed, reset the ring at another location.
4. Pre-wet the soil with 2-3 liters of water. Let this soak in for at least 15-20 minutes. Then slowly pour water into the ring to a level of 20 cm, again making sure not to disturb the soil surface.
5. The infiltration rates at the beginning of the test will be quite variable. So for the first half-hour of the test record at 1-5 minute intervals. Note that it will be easier to process the data if you record time in minutes since initiation of the test rather than as clock time.
6. After each recording top up the water level to 20 cm. After the first half hour record at 10-20 minute intervals for an additional 2 hours, or until the infiltration rates have stabilized. Top-up the water level to 20 cm after each reading (see infiltration field data entry sheet in the Appendix).

Why are we using single-ring infiltration testing?

The LDSF emphasizes landscape level measurements, or in other words measurements are repeated many times across large areas (landscapes).

The approach is to collect a statistical sample of the landscapes being surveyed and develop models based on these data.

The single-ring infiltration test is a robust method for calculating infiltration rates. While double-ring may also be used, they are often too time consuming and require very large quantities of water, not allowing for repeated measurements across a landscape.



Landform and land cover classification

Land cover is recorded in all plots using a simplified version of the FAO Land Cover Classification System (LCCS), which was developed in the context of the FAO-AFRICOVER project (<http://www.africover.org>). In addition, vegetation is classified according to White, 1983. Also, scores are made of “impact on habitat”, adapted from Royal Botanic Gardens, Kew (<http://www.kew.org>).

The “binary phase” of LCCS recognizes 8 primary land cover types, 5 of which are sampled in the LDSF. These are (i) cultivated and managed terrestrial areas, (ii) natural and semi-natural vegetation, (iii) cultivated aquatic or regularly flooded areas, (iv) natural or semi-natural aquatic or regularly flooded vegetation, and (v) bare areas.

Artificial surfaces, natural and artificial water bodies, and surfaces covered by snow, or ice are not formally surveyed in the LDSF, but if a plot falls within such features this is noted and the plot is georeferenced.

The LCCS further differentiates primary land cover systems on the basis of dominant vegetation life form (tree, shrub, herbaceous), vegetation cover, leaf phenology and morphology, and spatial and floristic aspects. All the associated features are assessed visually and are generally coded on either categorical or ordinal rating scales. The questions in the field recording sheet are designed to guide you through the classification process.

Topographic Position

To complete the section describing landform and topographic position, visually inspect the area surrounding the plot and select the appropriate categories provided on the field recording sheet and the major landform designation table. Skip the section on topographic position if the Major Landform is “Level Land”.

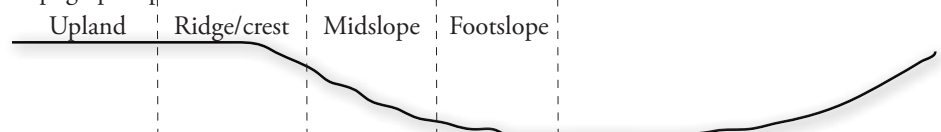
Continue through the form completing the “plot-level” information before moving to sub-plots.



No	Type	Description
1	Forest	A continuous stand of trees, their crowns interlocking.
2	Woodland	An open stand of trees with a canopy cover of 40 % or more. The field layer is usually dominated by grasses.
3a	Bushland	A mix of trees and shrubs with a canopy cover of 40% or more
3b	Thicket	A closed stand of bushes and climbers usually between 2 and 7 m tall
4	Shrubland	An open or closed stand of shrubs up to 3 m tall
5	Grassland	Land covered with grasses and other herbs, either without woody vegetation or the woody cover is less than 10 %
6	Wooded grassland	Land covered with grasses and other herbs, with woody vegetation covering between 10 and 40 % of the ground
7	Cropland	Cultivated land (or being prepared for cultivation (if sampling in the dry season)) with annual or perennial crops
8	Mangrove	Open or closed stands of trees or bushes occurring on shores between high and low water mark.
9	Freshwater aquatic	Herbaceous freshwater swamp and aquatic vegetation/ Wetland
10	Halophytic	Saline and brackish swamp vegetation
11	Distinct / restricted	Formation of distinct physiognomy (vegetative formations) but restricted distribution, e.g. bamboo, inselbergs etc.
12	Other	Describe...

Source: White (1983)

Topographic positions:



Soil sampling

You will need a soil auger marked at 20, 50, 80 and 110cm, sturdy plastic bags, a mixing trowel, a permanent marker, labels and buckets. You will need buckets with different colors for topsoil and subsoil samples.

1. Collect topsoil (0-20 cm) and subsoil (20-50 cm) samples from the center of each subplot using an auger.
2. Conduct field soil texture tests using the texture by feel method (see Appendix) for each topsoil and subsoil sample.
3. Pool (composite) topsoil samples from each subplot into one bucket, and do the same for subsoil (in a different bucket).
4. Mix the soil thoroughly in the buckets.
5. Take a representative ~700 g sub-sample and place it in a plastic bag.

Note that there should be one bag of topsoil and one bag of subsoil for each plot.

Auger depth restrictions are recorded (in cm) for each subplot, if they occur during sampling.

After getting back from the field the samples should be air-dried for at least 3 days as described in the laboratory SOP.

Caution: When augering the subsoil, make sure no soil from the surface (topsoil) falls into the auger hole. If this happens, remove this soil from the hole with the auger or your hand and discard it.

Cumulative mass soil sampling

Cumulative mass sampling is done to calculate nutrient and/or carbon stocks on a soil mass basis rather than using bulk density. The idea is to auger in 20 cm increments to 110cm, collecting ALL of the soil from each depth increment.

The cumulative mass sample is collected from the center of the plot.

A sampling plate is used to easily capture any soil that falls out of the auger before transferring it to the bucket and to prevent collapse of the auger hole (see inset photo below).

1. Press the sampling plate firmly onto the soil, so the plate is flush with the soil surface.



2. Place the auger in the centre of the hole in the plate and begin to auger straight down.
3. Auger down to 20 cm, collecting ALL of the soil from the auger into the bucket. Then transfer all of the soil to a clearly labeled plastic bag.
4. The next samples to be collected are from 20-50, 50-80 and 80-110 cm.

Depending on soil texture, a clay, combination or sand

auger can be used, but use the same auger for the entire depth (profile). Changing augers may change the volume of the auger hole. Always record diameter of auger.

Caution: You must auger straight down. If your augering becomes slanted so that you are augering at an angle, stop and start again in a new location because this will not be an accurate measurement of the depth.

Do not overfill the auger when taking a cumulative mass sample as this will distort the volume of the auger hole. To avoid this, empty the auger regularly (after approximately every 3 turns).

If the soil is very dry, it may be difficult to auger. Pre-wetting the soil before augering each increment may be helpful.

Labeling is critical!

Site, cluster, plot and depth code should be legibly recorded with a permanent marker on the outside of the plastic bag. A paper label containing the same information (written with a permanent marker or pencil) should be placed inside the bag. Also write the date when the sample was collected. **Samples should be double-bagged.**

Example from Merar site, cluster one, plot one (topsoil (TOP) and cumulative mass (CM) sample, respectively):

- Merar.1.1 TOP || Merar.1.1 SUB
- Merar.1.1 CM 0-20 || Merar.1.1 CM 20-50 || Merar.1.1 CM 50-80 || Merar.1.1 CM 80-110



measuring

Woody Cover

Impact on habitat (0, none; 3, severe);

1. Impact of tree cutting
2. Impact of agriculture
3. Impact of grazing
4. Impact of fire
5. Urban activities
6. Industrial activities
7. Impacts of erosion
8. Impact of alien vegetation]
9. Impact of firewood collection

Next, measure the distance t to its nearest neighboring plant (x_2). Note, however that the angle of the measurement must be constrained to lie in the hemisphere of a line that lies perpendicular to x .

This is the T-square distance.

Biomass measurements

For both trees and shrubs, the height of three (3) individual plants is measured using either the height pole or a clinometer.

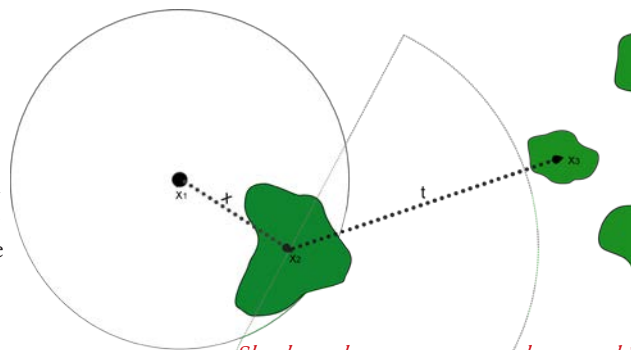
For trees, the circumference at breast height (1.3m above ground level) of each of the three trees in each subplot is measured. In instances where a tree branches below this level, measure the main trunk or the diameters of all of the branches that have a circumference $>10\text{cm}$ at 1.3 meters above ground level and average these. For trees that are tilted determine the 1.3 meter level from the down-slope direction and measure the diameter there.

For shrubs, also measure the width and length of the three shrubs in each subplot.

The three shrubs and trees, respectively, that are measured above should be located in different parts of the sub-plot, if possible.

Shrub and Tree density

Count all trees and shrubs in each subplot and enter the results into the field form (page 2).



Shrubs and trees are measured separately!

such as the point-centered quarter method, is that it is less prone to bias where plants are not randomly distributed.

Standing at the center of each subplot record the distances x from the subplot center point (x_1) to the nearest tree or shrub (x_2). Measure this either to the center of the tree trunk, or to the central portion of the shrub.

The T-square method

The “T-square” method is one of the most robust distance methods for sampling woody plant communities, particularly in forests, but also in rangelands. It can be used to estimate stand parameters such as density, basal area, biovolume, and depending on the availability of suitable allometric equations, also biomass. The advantage of this method, over other commonly used distance methods

Tree and shrub biodiversity

Biodiversity of trees and shrubs is recorded in the field as follows:

1. For the 3 trees that were measured as part of the biomass measurements, record their species (Plant 1, Plant 2, Plant 3).
2. List remaining tree species in each subplot in the bottom of the field form, comma-separating each entry.
3. Follow the same procedure for shrubs.

If you do not know the latin names of the shrubs and/or trees, record the common or local names of the shrubs or trees.



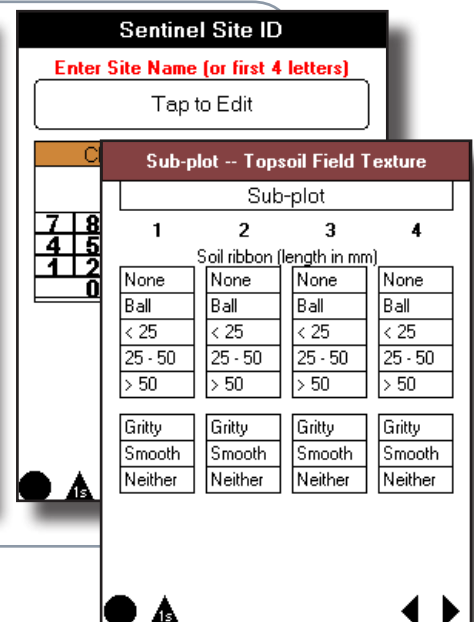
Electronic field data entry

In the LDSF, databases and data entry screens have been developed for various mobile devices and smartphones for direct data entry in the field. The data entered is uploaded to the central database in Nairobi, Kenya, after the completion of a survey. These systems increase efficiency and reduce potential errors in the data capture process.

CyberTracker

The CyberTracker (<http://www.cybertracker.co.za>) software is a free and efficient method for gps field data collection, and can be used on smartphones or handheld computers.

CyberTracker is primarily a data capture tool, but also has some basic GIS functionality. It was originally developed to record wildlife movement in the Central African rain forest. We developed a CyberTracker application for LDSF field data entry.



PLOT (1,000 m²)

LDSF Field Form v4 2013

Site:

Date (ddmmyy):

Latitude (DD):

Cluster:

Photo ID:

Longitude (DD):

Country:

Plot:

Elevation (m):

Pos error (m):

Name:

Slope Up °: ____ Slope Down °: ____

Major landform: Level Sloping Steep Composite

Position on topographic sequence:

Upland Ridge/Crest Midslope Foothlope Bottomland

Landform designation:

- | | | |
|-----------------------------------------------------|---------------------------------------------------|------------------------------------------------|
| <input type="checkbox"/> Medium gradient mountain | <input type="checkbox"/> Dissected plain | <input type="checkbox"/> Major depression |
| <input type="checkbox"/> Medium gradient hill | <input type="checkbox"/> High gradient mountain | <input type="checkbox"/> Narrow plateau |
| <input type="checkbox"/> Medium gradient escarpment | <input type="checkbox"/> High gradient hill | <input type="checkbox"/> Plain |
| <input type="checkbox"/> Ridges | <input type="checkbox"/> High gradient escarpment | <input type="checkbox"/> Low gradient mountain |
| <input type="checkbox"/> Mountainous highland | <input type="checkbox"/> Valley | <input type="checkbox"/> Low gradient hill |

Plot bare? Yes No

Plot regularly flooded? Yes No

Plot cultivated? Yes No

Vegetation types:

- Trees Yes No
 Shrubs Yes No
 Graminoids Yes No
 Forbs Yes No
 Other Yes No

Woody leaf types:

- Broadleaf Yes No
 Needle leaf Yes No
 Allophytic Yes No
 Evergreen Yes No
 Deciduous Yes No

Vegetation structure*:

Other description:

* Forest, Woodland, Bushland, Thicket, Shrubland, Grassland, Wooded grassland, Cropland, Mangrove, Freshwater aquatic, Halophytic, Other

Herb height (m): 0.8-3.0 (m) 0.3-3.0 (m) 0.3-0.8 (m) 0.03-0.3 (m) Herbaceous annual: Yes No

Same landuse since 1990: Yes No Land ownership: Private Communal Government Don't Know

Primary current use:

- Food/Beverage Yes No
 Timber/fuelwood Yes No
 Forage: Yes No
 Other: Yes No

Soil and water conservation:

- Number: ____ None Vegetative Structural
 Other:

Impact on habitat:

- | | | | | |
|--------------------------|--------------------------|--------------------------|--------------------------|-------------------------------|
| 0 | 1 | 2 | 3 | |
| <input type="checkbox"/> | <input type="checkbox"/> | <input type="checkbox"/> | <input type="checkbox"/> | Impact of tree cutting |
| <input type="checkbox"/> | <input type="checkbox"/> | <input type="checkbox"/> | <input type="checkbox"/> | Impact of agriculture |
| <input type="checkbox"/> | <input type="checkbox"/> | <input type="checkbox"/> | <input type="checkbox"/> | Impact of grazing/browsing |
| <input type="checkbox"/> | <input type="checkbox"/> | <input type="checkbox"/> | <input type="checkbox"/> | Impact of fire |
| <input type="checkbox"/> | <input type="checkbox"/> | <input type="checkbox"/> | <input type="checkbox"/> | Impact of urban activities |
| <input type="checkbox"/> | <input type="checkbox"/> | <input type="checkbox"/> | <input type="checkbox"/> | Impact of industry |
| <input type="checkbox"/> | <input type="checkbox"/> | <input type="checkbox"/> | <input type="checkbox"/> | Impact of erosion |
| <input type="checkbox"/> | <input type="checkbox"/> | <input type="checkbox"/> | <input type="checkbox"/> | Impact of alien vegetation |
| <input type="checkbox"/> | <input type="checkbox"/> | <input type="checkbox"/> | <input type="checkbox"/> | Impact of firewood collection |
| <input type="checkbox"/> | <input type="checkbox"/> | <input type="checkbox"/> | <input type="checkbox"/> | Other: |

Vegetation strata description:

Describe land cover/ use history:

SUB-PLOT (100 m ²)		1		2		3		4	
Rock/stone, Gravel cover (%)		<input type="checkbox"/> <5 <input type="checkbox"/> 5-40 <input type="checkbox"/> >40		<input type="checkbox"/> <5 <input type="checkbox"/> 5-40 <input type="checkbox"/> >40		<input type="checkbox"/> <5 <input type="checkbox"/> 5-40 <input type="checkbox"/> >40		<input type="checkbox"/> <5 <input type="checkbox"/> 5-40 <input type="checkbox"/> >40	
Visible erosion		<input type="checkbox"/> None <input type="checkbox"/> Sheet <input type="checkbox"/> Rill <input type="checkbox"/> Gully/Mass		<input type="checkbox"/> None <input type="checkbox"/> Sheet <input type="checkbox"/> Rill <input type="checkbox"/> Gully/Mass		<input type="checkbox"/> None <input type="checkbox"/> Sheet <input type="checkbox"/> Rill <input type="checkbox"/> Gully/Mass		<input type="checkbox"/> None <input type="checkbox"/> Sheet <input type="checkbox"/> Rill <input type="checkbox"/> Gully/Mass	
Woody Cover rating (%)		<input type="checkbox"/> Absent <input type="checkbox"/> 15-40 <input type="checkbox"/> < 4 <input type="checkbox"/> 40-65 <input type="checkbox"/> 4-15 <input type="checkbox"/> > 65		<input type="checkbox"/> Absent <input type="checkbox"/> 15-40 <input type="checkbox"/> < 4 <input type="checkbox"/> 40-65 <input type="checkbox"/> 4-15 <input type="checkbox"/> > 65		<input type="checkbox"/> Absent <input type="checkbox"/> 15-40 <input type="checkbox"/> < 4 <input type="checkbox"/> 40-65 <input type="checkbox"/> 4-15 <input type="checkbox"/> > 65		<input type="checkbox"/> Absent <input type="checkbox"/> 15-40 <input type="checkbox"/> < 4 <input type="checkbox"/> 40-65 <input type="checkbox"/> 4-15 <input type="checkbox"/> > 65	
Herbaceous Cover rating (%)		<input type="checkbox"/> Absent <input type="checkbox"/> 15-40 <input type="checkbox"/> < 4 <input type="checkbox"/> 40-65 <input type="checkbox"/> 4-15 <input type="checkbox"/> > 65		<input type="checkbox"/> Absent <input type="checkbox"/> 15-40 <input type="checkbox"/> < 4 <input type="checkbox"/> 40-65 <input type="checkbox"/> 4-15 <input type="checkbox"/> > 65		<input type="checkbox"/> Absent <input type="checkbox"/> 15-40 <input type="checkbox"/> < 4 <input type="checkbox"/> 40-65 <input type="checkbox"/> 4-15 <input type="checkbox"/> > 65		<input type="checkbox"/> Absent <input type="checkbox"/> 15-40 <input type="checkbox"/> < 4 <input type="checkbox"/> 40-65 <input type="checkbox"/> 4-15 <input type="checkbox"/> > 65	
Auger depth restriction (cm)		cm		cm		cm		cm	
Topsoil ribbon length (mm)	Texture>(*Gritty/Smooth/Neither)	Length: mm	*Texture:	Length: mm	*Texture:	Length: mm	*Texture:	Length: mm	*Texture:
Subsoil ribbon length (mm)	Texture>(*Gritty/Smooth/Neither)	Length: mm	*Texture:	Length: mm	*Texture:	Length: mm	*Texture:	Length: mm	*Texture:

Notes:

Site: _____ Date: _____
 Cluster: _____
 Plot: _____

Density and Distance Measurements of Trees and Shrubs

Subplot	1		2		3		4	
Description	Shrubs Subplot 1	Trees Subplot 1	Shrubs Subplot 2	Trees Subplot 2	Shrubs Subplot 3	Trees Subplot 3	Shrubs Subplot 4	Trees Subplot 4
Subplot plant density (count)								
Point- plant distance (m)	m	m	m	m	m	m	m	m
Plant- plant distance (m)	m	m	m	m	m	m	m	m

Select Three Trees and Three Shrubs Within Each Subplot to Collect Biomass Measurements

Subplot	1		2		3		4		
Description	Shrubs Subplot 1	Trees Subplot 1	Shrubs Subplot 2	Trees Subplot 2	Shrubs Subplot 3	Trees Subplot 3	Shrubs Subplot 4	Trees Subplot 4	
Plant 1	Height	m	m	m	m	m	m	m	
	Length	m	cm	m	cm	m	cm	m	cm
	Width	m	Circumference↑	m	Circumference↑	m	Circumference↑	m	Circumference↑
	Species (scientific, common, or local name)								
Plant 2	Height	m	m	m	m	m	m	m	
	Length	m	cm	m	cm	m	cm	m	cm
	Width	m	Circumference↑	m	Circumference↑	m	Circumference↑	m	Circumference↑
	Species (scientific, common, or local name)								
Plant 3	Height	m	m	m	m	m	m	m	
	Length	m	cm	m	cm	m	cm	m	cm
	Width	m	Circumference↑	m	Circumference↑	m	Circumference↑	m	Circumference↑
	Species (scientific, common, or local name)								

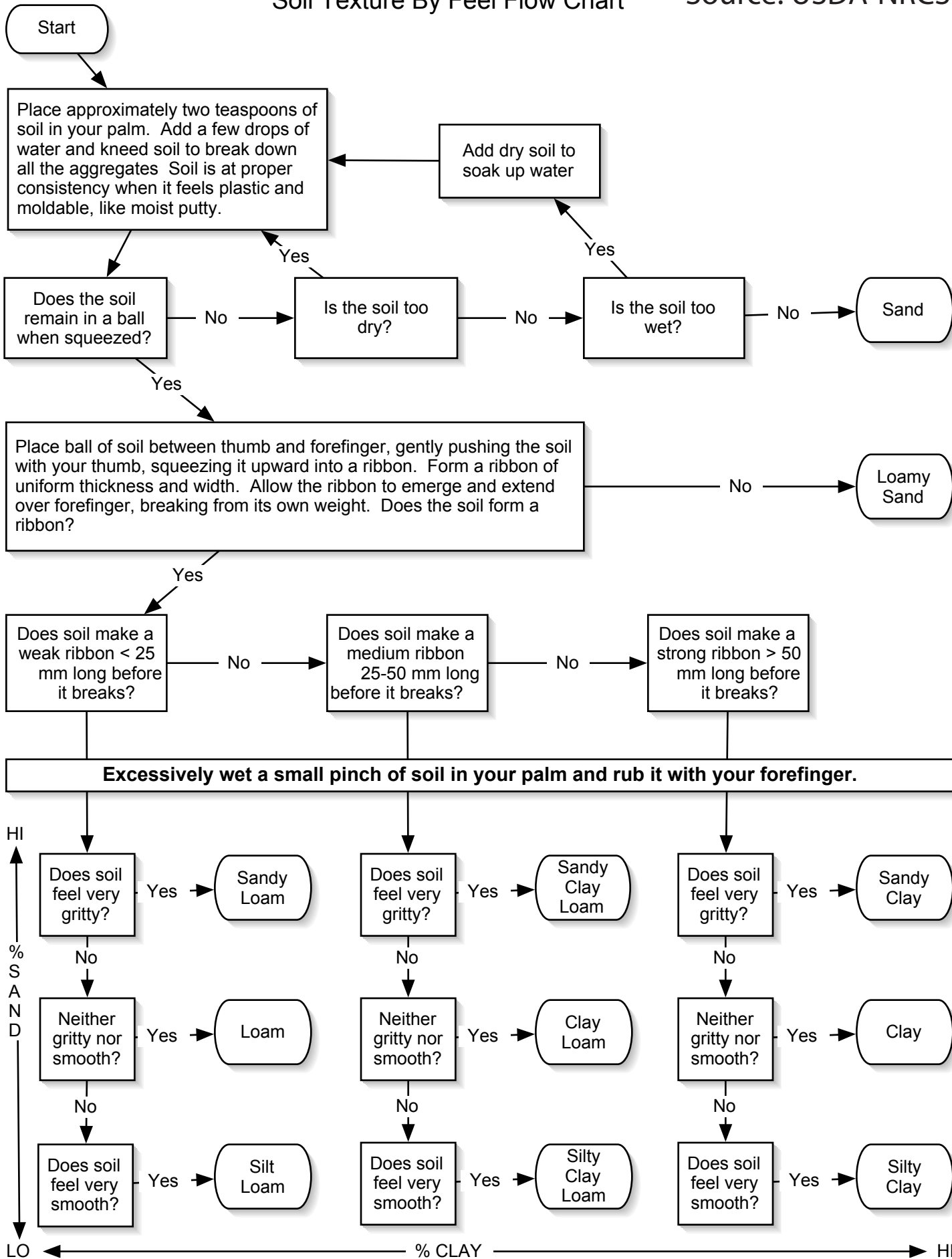
List Any Remaining Species of Trees and Shrubs in the Subplot (scientific, common, or local name)								
-------------------------------------------------------------------------------------------------------------	--	--	--	--	--	--	--	--

LDSF Infiltration Form			
Site:		Plot:	
Cluster:		Date:	
Start minute	End minute	Start level (cm)	End level (cm)
0	5		
5	10		
10	15		
15	20		
20	25		
25	30		
30	40		
40	50		
50	60		
60	70		
70	80		
80	90		
90	110		
110	130		
130	150		

Notes:

Soil Texture By Feel Flow Chart

Source: USDA-NRCS





<http://gsl.worldagroforestry.org>